



RECP #: 752695

RECORDED 5/8/2019 AT 1:12 PM BK# 2620 PG# 1737

Debra K. Lee, CLERK OF LARAMIE COUNTY, WY PAGE 1 OF 1

STATE OF WYOMING CORNER RECORD

(In compliance with the CORNER PERPETUATION AND FILING ACT, Wyoming Statutes, 1997 Section 33-29-140, et. seq., and the Rules and Regulations of the Board of Registrations for Professional Engineers and Professional Land Surveyors)

NORTH QUARTER CORNER SECTION 5, T. 18 N., R. 61 W., 6TH P.M., LARAMIE COUNTY, WYOMING

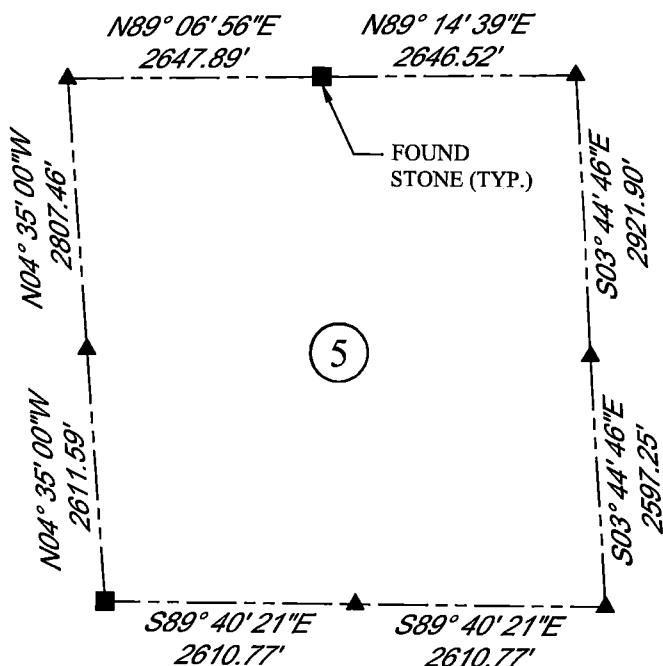
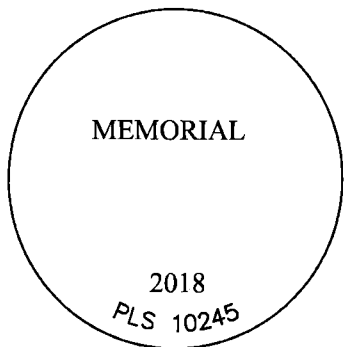
GLO: SET A GRANITE STONE 16X8X4, 11 IN DEEP MARKED 1/4 ON NORTH FACE FOR 1/4 SEC. COR.
FOUND: FOUND GRANITE STONE WITH "1/4" MARKED ON IT. STONE WAS LOOSELY SET.
SET: 3.25" ALUMINUM CAP, MARKED AS SHOWN. SET ON WEST SIDE OF STONE.



SCALE: NONE

NORTH DETERMINED BY G.P.S OBSERVATIONS

SET 3.25" ALUMINUM CAP, STAMPED AS SHOWN



LEGEND:

- FOUND BLM CAP
- FOUND USFS CAP
- FOUND STONE
- FOUND PRIVATE MONUMENT
- ◆ CALCULATED POSITION
- ▲ SET MONUMENT (LS10245)
- SECTION LINE

DATE OF FIELD WORK: 09/20/2018 OFFICE REFERENCE: MERIDEN

CROSS INDEX DIAGRAM

	1	2	3	4	5	6	7	8	9	10	11	12	13	14	15	16	17	18	19	20	21	22	23	24	25	
A																										
B																										
C																										
D																										
E																										
F																										
G																										
H																										
J																										
K																										
L																										
M																										
N																										
O																										
P																										
Q																										
R																										
S																										
T																										
U																										
V																										
W																										
X																										
Y																										
Z																										
	1	2	3	4	5	6	7	8	9	10	11	12	13	14	15	16	17	18	19	20	21	22	23	24	25	

WOOD
2615 AVIATION DRIVE
SHERIDAN, WY 82801
PH: 307-675-6400



THIS CORNER RECORD WAS PREPARED BY ME OR UNDER MY DIRECTION AND SUPERVISION, SEAL AND SIGNATURE

